



Eastlakes Edition

February 8, 2019

Term 1 Week 2

Rise to the Challenge



Welcome to the 2019 school year!

Welcome back to all Eastlakes families and welcome also to new families enrolling at our school for the first time. Everyone has returned rested and ready for learning after the summer holidays. A special welcome to our new Kindergarten students and their families, we hope that your time at Eastlakes PS will be happy, productive and with many opportunities to form special friendships.

Students have been placed in their new classes for 2019 and everyone has settled in well across the school. We have had an increase in enrolment numbers and have formed 8 mainstream classes this year. The school has also established an Autism support class making 9 classes across the school.

Welcome to Ms Jasmine Harrison who was successful through merit selection in gaining the teacher position for the Autism support class. Ms Harrison comes with experience and a passion for teaching. We welcome back Ms Iliana Santopietro returning from maternity leave.

The staff look forward to an exciting year ahead and already have been planning interesting and exciting learning experiences and opportunities.

I look forward to working with our whole school community in continuing to ensure Eastlakes PS is a place where all students can learn and achieve.

Anthia Tsantoulis
Principal



Classes, Programs and Staff 2019

Class	Teacher
KW	Mrs Whyte
1-KSC	Ms Santopietro and Mrs Carter
2-1O	Ms Olusum
2-1S	Mrs Stephan
4-3SH	Mrs Sippel and Mrs Holland
4-3R	Ms Roth
6-5P	Mr Pizanias
6-5V	Ms Vella
3-KH	Ms Harrison

Program	Teacher
Library	Ms Atlamaz
RFF	Mrs Holland and Mrs Rose
Bangla CL	Mrs Aktar
EALD	Mrs Taylor and Mrs Quartly
Learning and Support	Ms McConachy and Mr Schwartzman
Counsellor	Mr Ulrick

Non -Teaching Staff	
Principal	Ms Tsantoulis
School Administration Manager	Mrs Peralta
School Administration Officer	Mrs Fitzpatrick
School Learning Support Officer	Mrs Ayyan Ms Bell
General Assistant	Mr Kozarovski



MEET THE TEACHER

You will receive an invitation soon to attend our Meet the Teacher event that will be held in Week 4 Wednesday 20 February. This is a great opportunity for parents to find out more about class and stage arrangements for the year, major events your child will participate in, syllabus requirements and homework expectations and other relevant topics. Looking forward to see you all at our Meet the Teacher event.

Crunch and Sip

We are continuing with The Crunch and Sip program in 201. Students are encouraged to bring a piece of fresh fruit or vegetable to crunch on and water to sip on. Crunch and Sip happens during the morning session about 10am every day.



Positive Behaviour for Learning

Our school expectations are:

We are respectful

We are responsible

We are learners



Term 1 Calendar Events

Weeks 2 to 9	UNSW Swimming Years 3 to 6
Weeks 3 to 11	Got Game Dance Classes K-6
Weeks 3 to 10	Young Engineers Stage 3
Weeks 4 to 11	SRE
Week 4	Meet the Teacher
Week 7	Selective HS Placement Test
Week 8	Return High School Expressions of Interest – Year 6
Week 9	School Photo Day
Week 10	Parent Teacher Interviews
Weeks 2,4,6,8,10	K-6 Assemblies

A term calendar will be sent home with details.



Swimming Program 3-6 @UNSW

Thank you to MGM Properties for their sponsorship of our Term 1 Swimming Program at the University of New South Wales. This program is now in its 5th year. It has been a highly popular and successful with students swimming skills greatly improving each year.

MGM

properties

Proud Sponsors of Eastlakes Public School Swimming Program

9317 5222
www.mgmproperties.com.au

Attendance

Students must be at school every day the school is open.

EVERY DAY COUNTS.... A day here or there doesn't mean much, but....				
When your child misses just....	That equals...	Which is....	and therefore, from Kindy to Year 12, that is...	This means that the best your child can achieve is....
1 day each fortnight	20 days per year	4 weeks per year	Nearly 1 ½ years of school	Equal to finishing Year 11
1 day per week	40 days per year	8 weeks per year	Over 2 ½ years of school	Equal to finishing Year 10
2 days a week	80 days per year	16 weeks per year	Over 5 years of learning	Equal to finishing Year 7
3 days a week	120 days per year	24 weeks per year	Nearly 8 years of learning	Equal to finishing Year 4

Give your child every
Chance to succeed.....

Every day counts!

TWITTER



Keep up to date with daily happenings at school
[@EastlakesPs](#) and [@EastlakesEAL/D](#)

School Website

www.eastlakes-p.schools.nsw.edu.au

School email

eastlakes-p.school@det.nsw.edu.au

School App

[Skoolbag](#)

Telephone 96673659

FAX 96674791

School Hours

8.30 – 9.00 Before School	<ul style="list-style-type: none"> Playground supervision starts at 8.30am - students should not arrive before this time. All children stay in the amphitheatre at this time and at 9am they line up in their class lines. K-6 Assembly on Monday morning in the amphitheatre.
9.00am - 11.00am	Class Time <ul style="list-style-type: none"> Crunch and Sip during this first session
11.00am 11.25am Recess	<ul style="list-style-type: none"> All students sit in the amphitheatre or COLA to eat their recess Students play in the COLA, amphitheatre or the hill.
11.25am- 1.10pm	Class Time
1.10pm - 1.20pm Eating Time	<ul style="list-style-type: none"> All students sit in the amphitheatre or COLA to eat their lunch under the supervision of their teacher.
1.20pm - 2.00pm Lunchtime	<ul style="list-style-type: none"> Students continue eating until they have finished their food and then move off to play in the amphitheatre, the hill or the COLA. Extracurricular activities will be available at various times during the year at lunchtime.
2.00pm - 3.00pm	Class Time
3.00pm After school	<ul style="list-style-type: none"> Students are dismissed at 3pm. Parents to meet their child/children in the amphitheatre at 3pm. All students to leave school grounds promptly at the end of the school day or attend SMOOSH.

SMOOSH

Out of school hours care on the school site SMOOSH (*Safe Multicultural Out of School Hours*) offers care for school-aged children aged 5-12 years, before and after school during the school term.

In order for a child to enrol at SMOOSH, they must be enrolled at Eastlakes Public School.

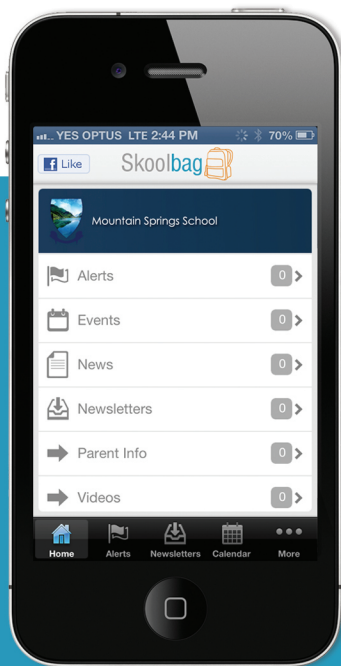
Contact the SMOOSH coordinator or speak with one of the employees at the school.

SMOOSH Mobile: 0431 427 176

Fax: 02-83388502

smoosh@SECC.org.au





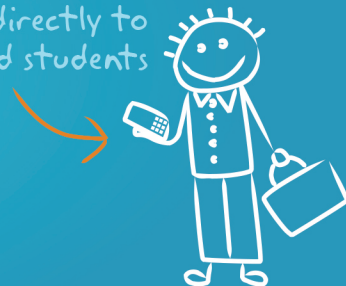
Skoolbag

Smartphone school to parent communication

Skoolbag is a mobile App for your school to communicate directly to both parents and students. It works through both smart phones and smart devices (such as iPads and Android Tablets). Ideal for:

- > School, free push notification alerts
- > School events
- > School newsletters
- > School documents
- > School RSS feeds
- > School social media (Facebook, Twitter)

Skoolbag delivers school notices directly to parents and students



How To Install Skoolbag On Your Smartphone

iPhone & iPad Users

1. Click the "App Store" icon on your Apple device.
2. Type your school name in the search, using suburb name will help.
3. If iPhone, you will see your school appear, click "Free" then "install".
4. If iPad, change the drop list to "iPhone Apps", your school will then be visible, click "Free" then "install".
5. When installed click "Open"
6. Select "OK" to receive push notifications, when asked.
7. Click the "More" button on the bottom right of the App, then "Setup".
8. Toggle on the Push Categories that are applicable for you.



Android Users

You must first have signed up with a Google Account before installing the app.

1. Click the "Play Store" button on your Android Device
2. Click the magnifying glass icon at the top and type in your school name, using suburb name will help.
3. Click the school name when it appears in the search.
4. Click the "Install" button.
5. Click "Accept" for various permissions (please note, we do not modify any of your personal data on your device).
6. Click "Open" when installed.
7. Click the "More" button on the bottom right of the App, then "Setup".
8. Toggle on the Push Categories that are applicable for you.



Google play

Don't forget to like us on Facebook! 

Find out more at www.skoolbag.com.au

Skoolbag delivers school notices directly to parents and students

